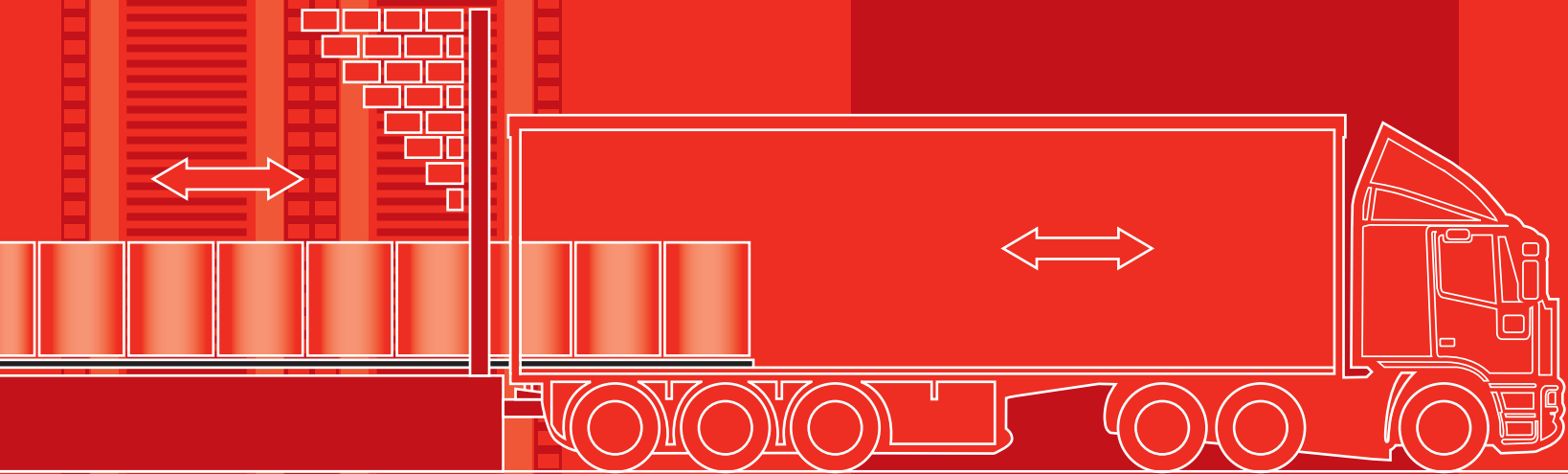
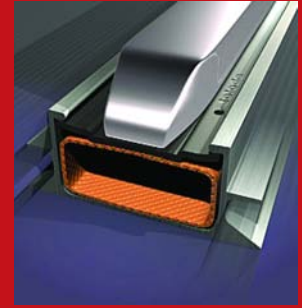
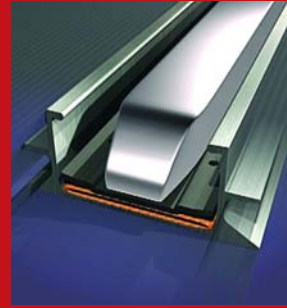




Joloda

TM

MAKING LIGHT WORK OF HEAVY LOADS



NEWSPRINT SHUTTLE TRAILER

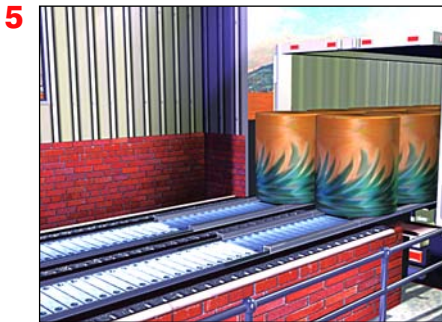
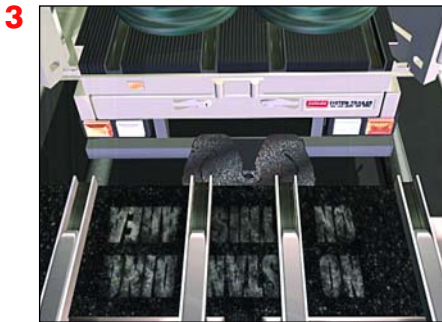
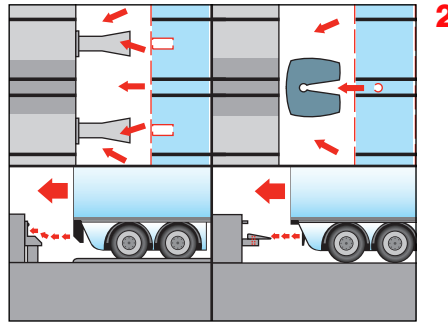
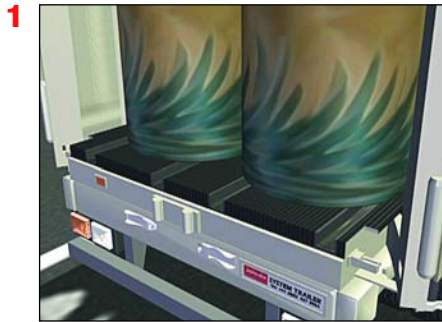
AUTOMATIC PAPER MILL TO PRESS ROOM TRANSFER

MEDIUM SHUTTLE

NEWSPRINT SHUTTLE TRAILER

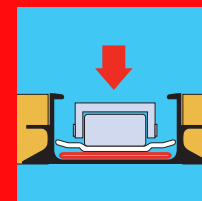
AUTOMATIC PAPER MILL TO NEWS ROOM TRANSFER

Making light work of heavy loads

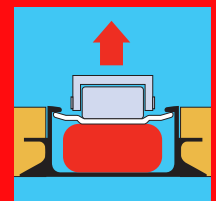


- Unloads up to 30 tons of print rolls in 90 seconds
- Comprises of 4 off 13.6m powered skates running in sunken track which is fitted with riser plate which pneumatically elevates the skates in both dock and trailer
- System controls are standard plc, with ramp up, ramp down and speed control from 3m to 30m per minute
- Relatively low cost trailer installation for middle distance shuttle operations
- Fail-safe manual skate back up system
- Accumulation of pallet loads on warehouse dock by moving floor or slipchain system with or without trailer present
- For mixed sizes of paper reels
- Removes fork truck from loading dock areas
- De-mans operation at press room and distribution centre
- Fail-safe dock lock and levelling devices to suit client and loading bay operation – see fig 2
- No movement of loads during transit
- Used by major press rooms and paper mills throughout Europe

Skate lowered



Skate raised



Patents applied for (UK & Worldwide)

Joloda International Limited

51 Speke Road, Garston, Liverpool, England L19 2NY
Tel: +44 (0) 151 427 8954 Fax: +44 (0) 151 427 1393
Email: info@joloda.com Website: www.joloda.com

Joloda™